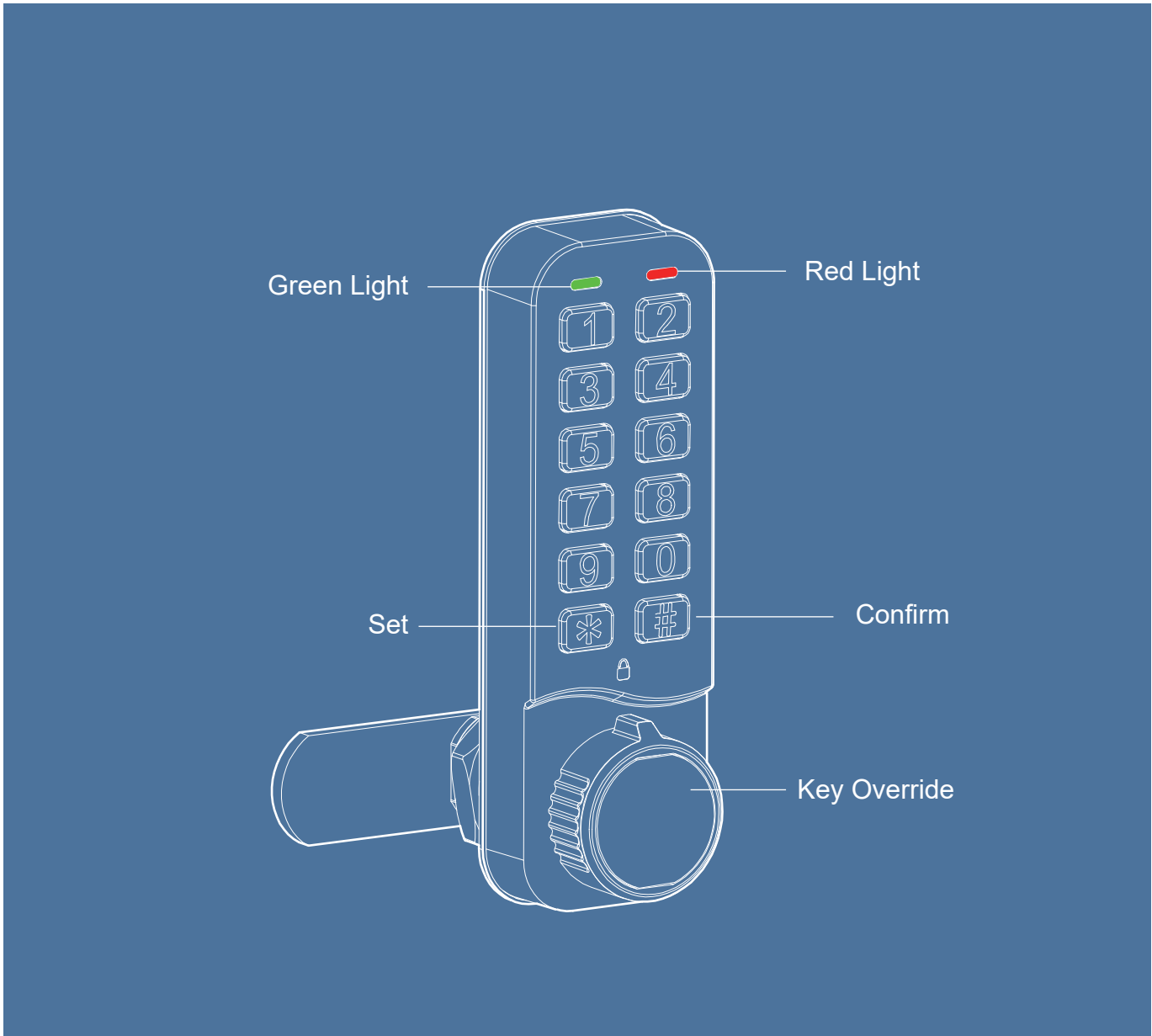




# "VIC" ELECTRONIC KEYPAD LOCK

## Operating Instructions



Code right: Green light will flash 2 times

Code wrong: Red light will flash 3 times

Occupied: In public mode: Green light will flash on every 6 seconds. (Enter the code to lock, the green LED light flashes at intervals, indicating the lock or cabinet is in an occupied state).

Succeed: Green light will flash 2 times, "beep"

Fail: Red light will flash 3 times

Low voltage: Red light will flash 3 times with "beep" alarm inform user to replace the battery, it could still allow to unlock for 100 openings.

**Note:** Operate each button within 4 seconds or the current operation need to restart.

## Mode Operation

### Mode Setting

<p>Private Mode</p>	<p>Set: * --8 digit master code--#--07--#          (Succeed: Green light will flash 2 times, "beep -")</p>
<p>Public Mode</p>	<p>Set: * --8 digit master code--#--06--#          (Succeed: Green light will flash 2 times, "beep -")          User code is one time valid, lock will keep open status until next user enter 4 digit code</p>

**Note:**

Factory settings:

1. Private mode
2. User code: 1111
3. Master code: 20050330(8 digit), Sub-master code(8 digit), Technician code(6 digit) are without setting
4. Auto-timed function is off

## Private Mode

### 1. Master Code Function

Function	Operation	Note
Open	8 digit master code	Re-lock automatically after 3 seconds
Set the master code	*--master code--#--01--# --new master code--#--master code--#	
Set the user code	*--master code--#--02--#--4 digit new user code--#	
Delete user code	*--master code--#--03--#	
Set or change sub-master code	*--master code--#--04--# --8 digit new sub-master code--#	
Delete sub-master code	*--master code--#--05--#	
Set public mode	*--master code--#--06--#	

### 2. Sub-master Code Function

Function	Operation	Note
Open	8 digit master code	Re-lock automatically after 3 seconds
Set user code	*--sub-master code--#--02--#--4 digit new user code--#	
Set sub-master code	*--sub-master code--#--04--#--new sub-master code--#	

### 3. User Code Function

Function	Operation	Note
Open	4 digit user code	Re-lock automatically after 3 seconds
Set user code	*--user code--#--new user code--#	

## Public Mode

### 1. Master Code Function

Function	Operation	Note
Open	8 digit master code	User code will be erased if open by master code
Set the master code	*--master code--#--01--#--new master code--# --new master code--#	
Set or change sub-master code	*--master code--#--04--#--new sub-master code--#	
Delete sub-master code	*--master code--#--05--#	
Set private mode	*--master code--#--07--#	
Set technician code	*--master code--#--08--#--6 digit new technician code--#	
Delete technician code	*--master code--#--09--#	
Set automatic open lock	*--master code--#--10--#--XX--#	1. [XX] Optional: 02,04,06,08,10,12 For example: 12 means 12 hours, the lock will open automatically after 12 hours.
Set Auto-timed unlock on (Default setting 12h)	*--master code--#--11--#	2. The time start to calculate when it is locked.
Auto-timed unlock off	*--master code--#--12--#	3. The auto time function will restart if it is open.
Set occupy light on	*--master code--#--13--#	
Set occupy light off	*--master code--#--14--#	

### 2. Sub-master Code Function

Function	Operation	Note
Open	8 digit sub-master code	User code is erased
Set sub-master code	*--sub-master code--#--04--# --new sub-master code--#	Re-lock automatically after 3 seconds

### 3. User Code Function

Function	Operation	Note
Open	4 digit user code	User code is erased
Set user code(Close lock)	4 digit code	Re-lock automatically after 3 seconds

## Public Mode

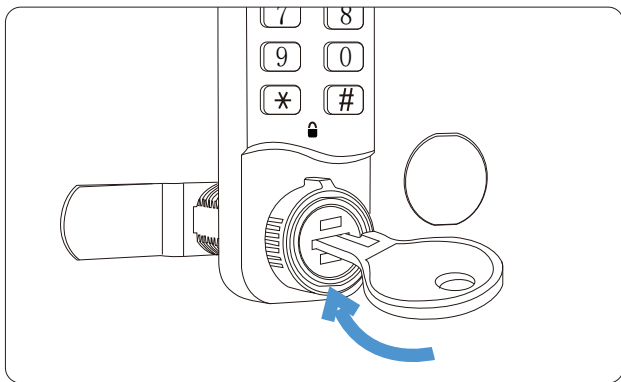
### 1. Technician Code Functions

Function	Operation	Note
Open	6 digit technician code	User code won't be erased

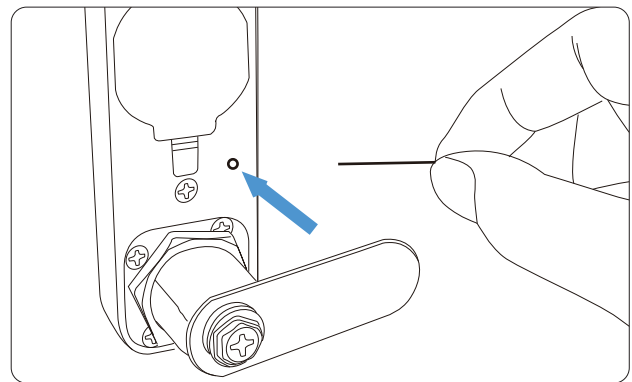
## Other Operations

1. Penalty time:  
Enter five incorrect codes will cause the lock shut down for 1 min.
2. Emergency opening:  
Open the protective cover, insert the mechanical key to emergency opening, the lock code still keep the previous setting(pic 1).
3. Initialize function

Function	Operation	Note
Initialize function	*--99--#--press back button	Enter the operation and press the reset button on the back of lock(pic 2) with 8 seconds, green light flash with "beep" alarm, locks go back to factory settings.



**pic1**



**pic2**