


PRODUCT SHEET

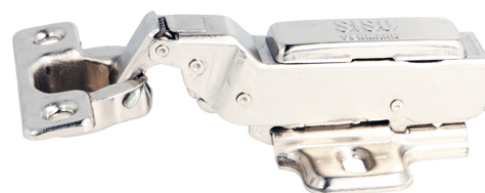
Description:





Soft Closing Hinge "C", $\varnothing 26$ mm, Clip-On, H=2, Plate F/Wood Screws Inset, 100 DG, Cup cc:38m, Mounting Plate F/Wood, Screws, H:2mm, W/SISO Name Plate, Hydraulic Plastic Pump

Item number:

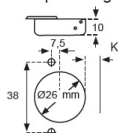
15.02.660-0

Units	Box	Carton	HS Code	Barcode
Pcs.	1	100	8302100090	
				5704866052634



Steel - Nickel Plated	Item No.	D: Overlay calculations	A: Gap calculations																				
 <p>Full overlay (A)</p> <p>H = H+10,5+K-D K D Door</p>	15.02.660 Incl. SISO name plate + mounting plate H = 0	<table border="1"> <tr><td>D</td><td>K</td><td>3</td><td>4</td><td>5</td></tr> <tr><td>0</td><td>13,5</td><td>14,5</td><td>15,5</td><td></td></tr> <tr><td>2</td><td>11,5</td><td>12,5</td><td>13,5</td><td></td></tr> <tr><td>4</td><td>9,5</td><td>10,5</td><td>11,5</td><td></td></tr> </table>	D	K	3	4	5	0	13,5	14,5	15,5		2	11,5	12,5	13,5		4	9,5	10,5	11,5		
D	K	3	4	5																			
0	13,5	14,5	15,5																				
2	11,5	12,5	13,5																				
4	9,5	10,5	11,5																				
 <p>Half overlay (B)</p> <p>H = H+1,5+K-D K D Door</p>	15.02.665 Incl. SISO name plate + mounting plate H = 0	<table border="1"> <tr><td>D</td><td>K</td><td>3</td><td>4</td><td>5</td></tr> <tr><td>0</td><td>4,5</td><td>5,5</td><td>6,5</td><td></td></tr> <tr><td>2</td><td>2,5</td><td>3,5</td><td>4,5</td><td></td></tr> <tr><td>4</td><td>0,5</td><td>1,5</td><td>2,5</td><td></td></tr> </table>	D	K	3	4	5	0	4,5	5,5	6,5		2	2,5	3,5	4,5		4	0,5	1,5	2,5		
D	K	3	4	5																			
0	4,5	5,5	6,5																				
2	2,5	3,5	4,5																				
4	0,5	1,5	2,5																				
 <p>Inset (C)</p> <p>H = H-8,5+K+A K A Door</p>	15.02.660 Incl. SISO name plate + mounting plate H = 2	<table border="1"> <tr><td>A</td><td>K</td><td>3</td><td>4</td><td>5</td></tr> <tr><td>0</td><td>5,5</td><td>6,5</td><td>7,5</td><td></td></tr> <tr><td>2</td><td>7</td><td>8</td><td>9</td><td></td></tr> </table>	A	K	3	4	5	0	5,5	6,5	7,5		2	7	8	9							
A	K	3	4	5																			
0	5,5	6,5	7,5																				
2	7	8	9																				
 <p>H = 0/2 t/chipboard screws Clip-on</p>		Delivered as standard mounting plate with all hinges. Chipboard screws to be ordered separately.																					

Cup drawing



Opening angle:	100°
Depth of hinge cup:	10 mm
Diameter of hinge cup:	26 mm
Mounting of hinge. Screw on:	c.c. 38 mm
Possible drilling distances on the door (K):	3-5 mm
Door thickness:	12-22 mm

SISO A/S

Mileparken 11
DK-2740 Skovlunde
Denmark
VAT: DK 24786013

Phone +45 45 830 900

www.siso.dk
siso@siso.dk

Danske Bank
Nytorv Branch
Copenhagen
SWIFT: DABADKKK

Account no.
4180 3112 112936
IBAN Account
DK7230003112112936