


# PRODUCT SHEET

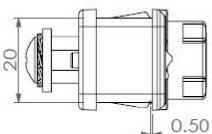
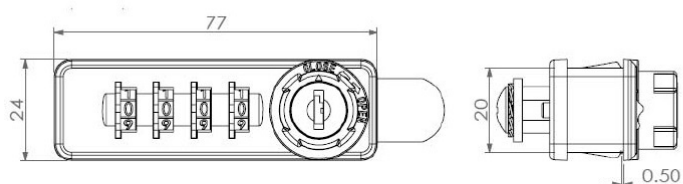
## Description:

Combi. Cam Lock M901, Public, 4-Digit, LH, 90DG, MK+Code Finder, Black, 73X20X15,5mm, Straight Cam C/E:40mm,, Closed 3 O´Clock, Open 12 O´Clock, Pre-coded 0000, Master, Key System #J13, Cylinder Centre to Edge of Lock Body: 12mm,, F/0,8-1,0mm Metal Panels Thickness, Horizontal Installation

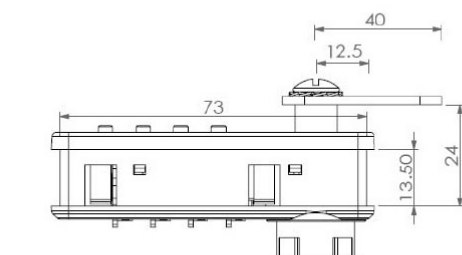
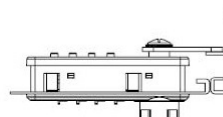
## Item number:

14.08.241-0

Units	Box	Carton	HS Code	Barcode
Pcs.	20	200	8301300000	
				5704866488327



Installation diagram

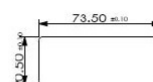
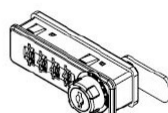


Core turn direction



0.8~1.0mm.  
Installation method 1: Clamp the steel door with the lock body, the thickness of the door it is 0.8-1.0mm.

14~19mm.  
Installation method 2: Use the back panel to lock the wooden door, the thickness of the door it is 14~19mm.



Refers to the hole size

## SISO A/S

Mileparken 11  
DK-2740 Skovlunde  
Denmark  
VAT: DK 24786013

Phone +45 45 830 900

www.siso.dk  
siso@siso.dk

Danske Bank  
Nytovr Branch  
Copenhagen  
SWIFT: DABADKKK

Account no.  
4180 3112 112936  
IBAN Account  
DK7230003112112936