


PRODUCT SHEET

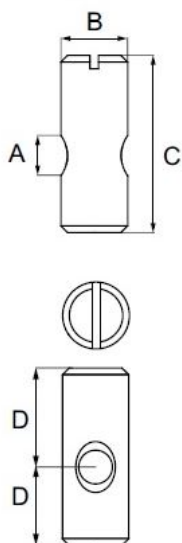
Description:

Cross Dowel $\varnothing 12 \times 30 \text{ mm}$ (15+15), M8, Steel, Bright Zinc Plated

Item number:

12.07.289-0

Units	Box	Carton	HS Code	Barcode
Pcs.	1	1000	7318190090	
				5704866023276



A	B	C	D*	Material	Finish
M6	$\varnothing 10 \text{ mm}$	13 mm	8/5 mm	Steel	Plain
M6	$\varnothing 10 \text{ mm}$	14 mm	8/6 mm	Steel	BZP/YZP
M6	$\varnothing 10 \text{ mm}$	14 mm	8/6 mm	Brass	Natural
M6	$\varnothing 10 \text{ mm}$	14 mm	8/6 mm	SS	Natural
M6	$\varnothing 10 \text{ mm}$	16 mm	10/6 mm	Steel	YZP
M6	$\varnothing 10 \text{ mm}$	18 mm	12/6 mm	Steel	YZP/BZP
M6	$\varnothing 10 \text{ mm}$	30 mm	20/10 mm	Steel	BZP
M6	$\varnothing 10 \text{ mm}$	20 mm	10/10 mm	Steel	BZP/YZP
M6	$\varnothing 10 \text{ mm}$	25 mm	12,5/12,5 mm	Steel	BZP
M6	$\varnothing 10 \text{ mm}$	30 mm	15/15 mm	Steel	BZP
M6	$\varnothing 10 \text{ mm}$	40 mm	20/20 mm	Steel	BZP
M6	$\varnothing 10 \text{ mm}$	45 mm	22,5/22,5 mm	Steel	BZP
M8	$\varnothing 12 \text{ mm}$	20 mm	10/10 mm	Steel	YZP
M8	$\varnothing 12 \text{ mm}$	25 mm	12,5/12,5 mm	Steel	BZP
M8	$\varnothing 12 \text{ mm}$	30 mm	15/15 mm	Steel	YZP
M8	$\varnothing 12 \text{ mm}$	50 mm	25/25 mm	Steel	BZP/YZP
M8	$\varnothing 12 \text{ mm}$	60 mm	30/30 mm	Steel	BZP

SISO A/S

Mileparken 11
DK-2740 Skovlunde
Denmark
VAT: DK 24786013

Phone +45 45 830 900

www.siso.dk
siso@siso.dk

Danske Bank
Nytorv Branch
Copenhagen
SWIFT: DABADKKK

Account no.
4180 3112 112936
IBAN Account
DK7230003112112936