


PRODUCT SHEET

Description:

Cross Dowel $\varnothing 10 \times 25 \text{mm} (12,5 + 12,5)$, M6, Steel, Bright Zinc Pl.



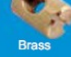
Item number:

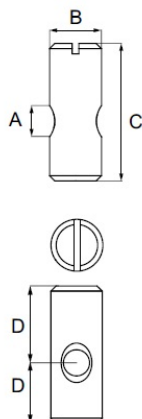
12.07.110-0

Units	Box	Carton	HS Code	Barcode
Pcs.	1	1500	7318190090	 5704866023122



CROSS DOWELS

Material	Steel, brass or stainless steel					
Type	With slot					
Finish	Steel, yellow zinc plated (YZP) Bright zinc plated (BZP), brass, natural Stainless steel, (SS), natural					
D*	Distance from centre of hole to edge					
A	B	C	D*	Material	Finish	Item No.
M6	$\varnothing 10 \text{ mm}$	13 mm	8/5 mm	Steel	Plain	# 12.07.006
M6	$\varnothing 10 \text{ mm}$	14 mm	8/6 mm	Steel	BZP/YZP	# 12.07.030/31
M6	$\varnothing 10 \text{ mm}$	14 mm	8/6 mm	Brass	Natural	# 12.07.041
M6	$\varnothing 10 \text{ mm}$	14 mm	8/6 mm	SS	Natural	# 12.07.043
M6	$\varnothing 10 \text{ mm}$	16 mm	10/6 mm	Steel	YZP	# 12.07.044
M6	$\varnothing 10 \text{ mm}$	18 mm	12/6 mm	Steel	YZP/BZP	# 12.07.327/328
M6	$\varnothing 10 \text{ mm}$	30 mm	20/10 mm	Steel	BZP	# 12.07.350
M6	$\varnothing 10 \text{ mm}$	20 mm	10/10 mm	Steel	BZP/YZP	# 12.07.070/071
M6	$\varnothing 10 \text{ mm}$	25 mm	12,5/12,5 mm	Steel	BZP	# 12.07.110
M6	$\varnothing 10 \text{ mm}$	30 mm	15/15 mm	Steel	BZP	# 12.07.150
M6	$\varnothing 10 \text{ mm}$	40 mm	20/20 mm	Steel	BZP	# 12.07.230
M6	$\varnothing 10 \text{ mm}$	45 mm	22,5/22,5 mm	Steel	BZP	# 12.07.270
M8	$\varnothing 12 \text{ mm}$	20 mm	10/10 mm	Steel	YZP	# 12.07.287
M8	$\varnothing 12 \text{ mm}$	25 mm	12,5/12,5 mm	Steel	BZP	# 12.07.288
M8	$\varnothing 12 \text{ mm}$	30 mm	15/15 mm	Steel	YZP	# 12.07.289
M8	$\varnothing 12 \text{ mm}$	50 mm	25/25 mm	Steel	BZP/YZP	# 12.07.291/92
M8	$\varnothing 12 \text{ mm}$	60 mm	30/30 mm	Steel	BZP	# 12.07.325



SISO A/S

Mileparken 11
DK-2740 Skovlunde
Denmark
VAT: DK 24786013

Phone +45 45 830 900

www.siso.dk
siso@siso.dk

Danske Bank
Nytrov Branch
Copenhagen
SWIFT: DABADKKK

Account no.
4180 3112 112936
IBAN Account
DK7230003112112936