


PRODUCT SHEET

Description:

Invis. Full Ext. Slide, Self Closing, BZP, 600mm W/Quick Release Handles & Soft Close Pumps
Pre-Installed

Item number:

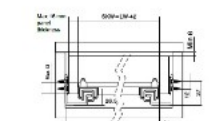
16.13.477-0

Units	Box	Carton	HS Code	Barcode
Pair	1	5	8302420090	
				5704866000932

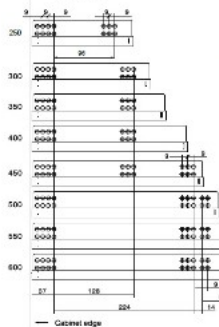


Installation dimensions

500W Internal drawer width 1000 Internal cabinet width

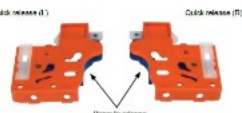
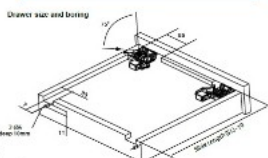


Slide pattern

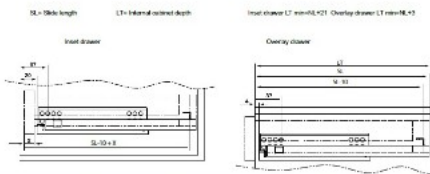


FULL EXTENSION W/QUICK RELEASE

- Features:**
 - Bottom mounted
 - Full extension
 - 3/ mm hole system
 - Self-closing and soft stop
 - Quick release function
 - Height adjustment of drawer
 - Max drawer width: 500 mm
- Material:** Cold rolled steel – 1,8 mm
- Finish:** Zinc plated
- Size:** From 250 to 600 mm
- Load capacity:** 25 kg
- Fixation:** Chipboard screws Ø6 mm
(Screws available on request)



Installation dimensions



Slide length	250 mm	300 mm	350 mm	400 mm	450 mm	500 mm	550 mm	600 mm
Item no.	16.13.476	16.13.471	16.13.472	16.13.473	16.13.474	16.13.475	16.13.476	16.13.477

SISO A/S

Mileparken 11
DK-2740 Skovlunde
Denmark
VAT: DK 24786013

Phone +45 45 830 900

www.siso.dk
siso@siso.dk

Danske Bank
Nytrov Branch
Copenhagen
SWIFT: DABADKKK

Account no.
4180 3112 112936
IBAN Account
DK7230003112112936