


# PRODUCT SHEET

## Description:

Invis. Full Ext. Slide, Self Closing, BZP, 300mm W/Quick Release Handles & Soft Close Pumps  
Pre-Installed

## Item number:

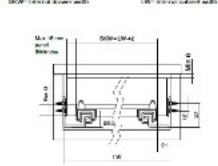
16.13.471-0

Units	Box	Carton	HS Code	Barcode
Pair	1	5	8302420090	
				5704866000871

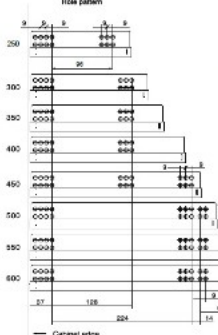


Installation dimensions

500W Internal drawer width 1000 Internal cabinet width



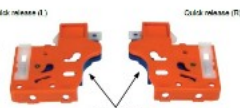
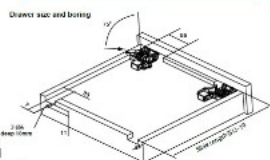
Slide pattern



Cabinet edge

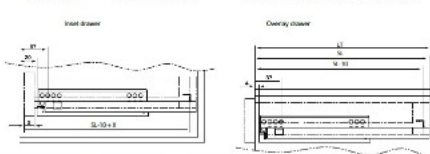
## FULL EXTENSION W/QUICK RELEASE

- Features:**
  - Bottom mounted
  - Full extension
  - 3/ mm hole system
  - Self-closing and soft stop
  - Quick release function
  - Height adjustment of drawer
  - Max drawer width: 500 mm
- Material:** Cold rolled steel – 1,8 mm
- Finish:** Zinc plated
- Size:** From 250 to 600 mm
- Load capacity:** 25 kg
- Fixation:** Chipboard screws Ø6 mm  
(Screws available on request)



Installation dimensions

SL = Slide length L1 = Internal cabinet depth Total drawer L1 min=ØL2+1 Overlay drawer L1 min=ØL+1



Slide length	250 mm	300 mm	350 mm	400 mm	450 mm	500 mm	550 mm	600 mm
Item no.	16.13.471	16.13.471	16.13.471	16.13.471	16.13.471	16.13.471	16.13.471	16.13.471

## SISO A/S

Mileparken 11  
DK-2740 Skovlunde  
Denmark  
VAT: DK 24786013

Phone +45 45 830 900

www.siso.dk  
siso@siso.dk

Danske Bank  
Nytrov Branch  
Copenhagen  
SWIFT: DABADKKK

Account no.  
4180 3112 112936  
IBAN Account  
DK7230003112112936